

Exceeding the speed limit: 1996 – 2006

This section deals with time series data from the last 10 years. Such historical data enables us to identify trends in changing driver behaviour in relation to exceeding the speed limit.

- The percentage of vehicles that exceed the speed limit on 30 mph roads has fallen over the last 10 years. The proportion of cars exceeding the speed limit in 1996 was almost three quarters; in 2006 this had fallen to a half.
- In 1996, 11 per cent of articulated HGVs exceed the speed limit of 60 mph on motorways. In 2006 this figure had fallen to just 2 per cent. However over the same period, the proportion of articulated HGVs exceeding the speed limit (40 mph) on single carriageway non-built-up roads has increased from 72 to 76 per cent.
- Sixty one per cent of 2-axle rigid HGVs were travelling faster than the limit on 30 mph roads in 1996 and this number fell to 46 per cent in 2006. On 40 mph roads however, the proportion of speeding vehicles increased from 16 to 24 per cent over the same period.
- The proportion of motorcycles speeding on 30 mph roads has fallen from 56 per cent in 1996 and 63 per cent in 1998 to 51 per cent in 2006.

Figure 2.6a Percentage of cars exceeding the speed limit on five road types: 1996 - 2006

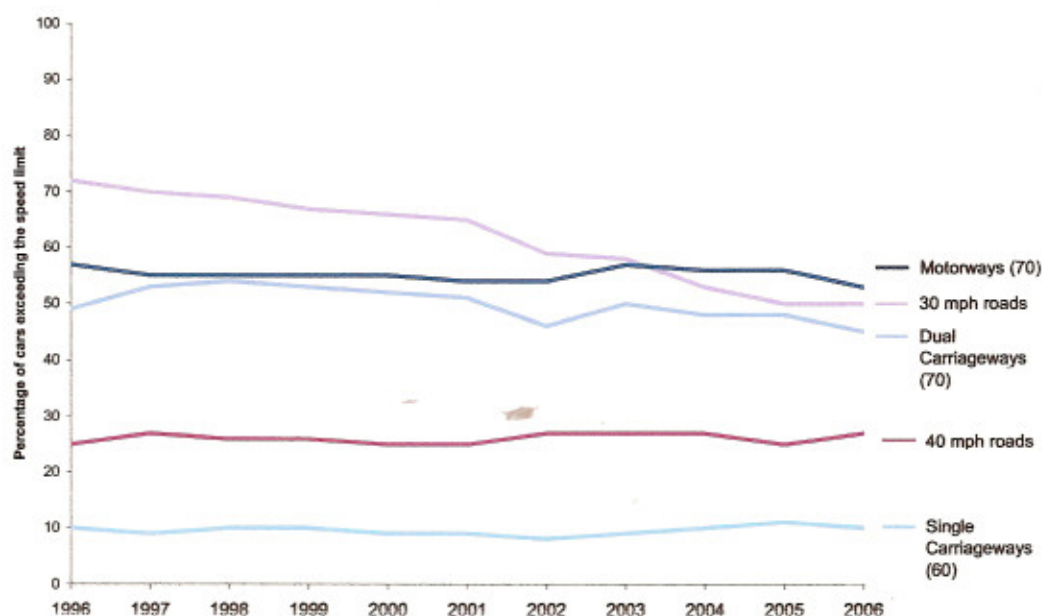


Figure 2.6b Percentage of buses exceeding the speed limit on five road types: 1996 - 2006

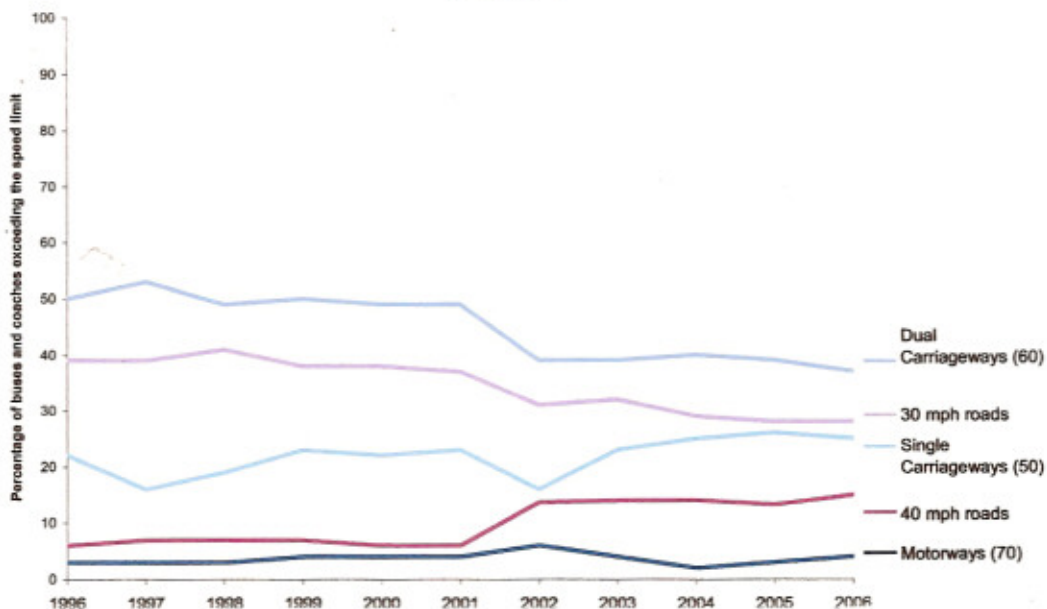


Figure 2.6c Percentage of articulated HGVs exceeding the speed limit on non-built-up roads: 1996 - 2006

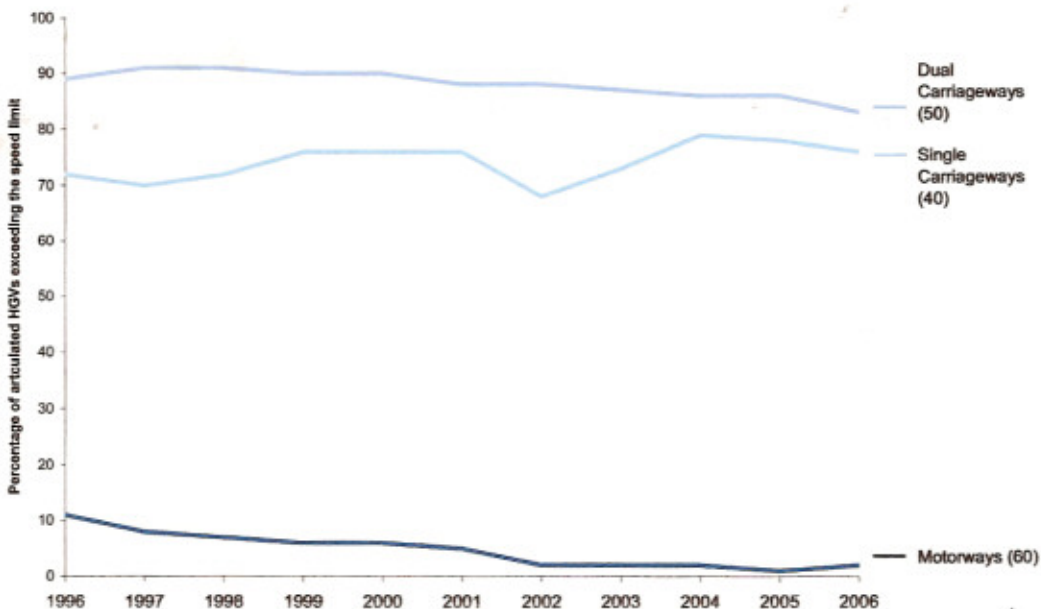


Figure 2.6d Percentage of 2-axle rigid HGVs exceeding the speed limit on built-up roads: 1996 - 2006

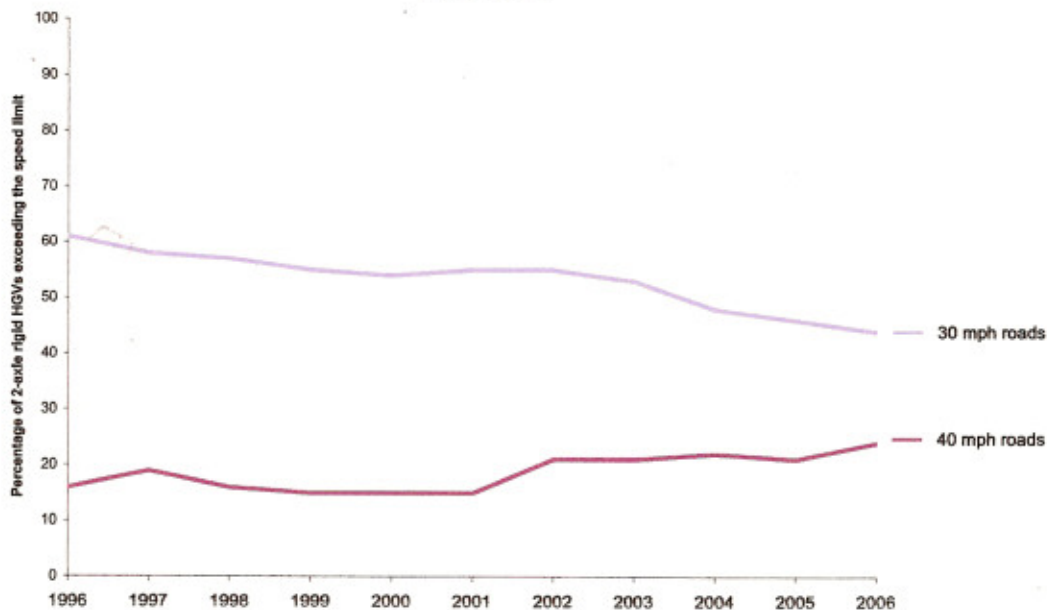


Figure 2.6e Percentage of motorcycles exceeding the speed limit on built-up roads: 1996 - 2006

